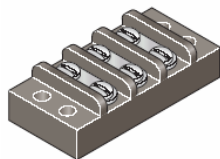


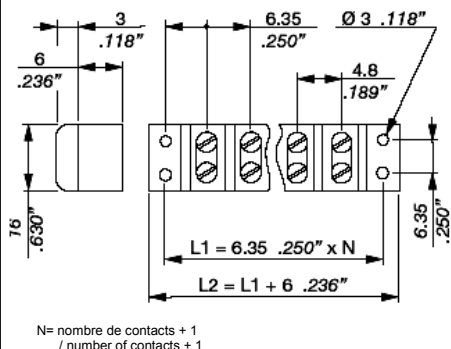
US 635

Pas / spacing : 6,35 mm

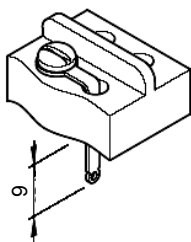
Nombre de pôles : 2 à 20



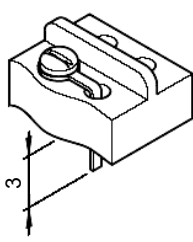
US 635-3



Options



US 636



US 637

Caractéristiques électriques /
Electrical characteristicsTension / rated voltage : 300 Volts
Intensité / rated current : 10 A

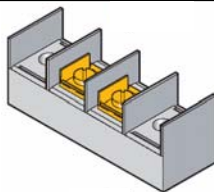
Matière / material

Vis / screw : acier / steel
Contact / terminal : laiton / brass
Matière / Insulation body: thermodurAutres caractéristiques /
Other characteristicsMarquage sur demande / Marking on request
Montage cosses sur demande
/ Special mounting on request
Couvercle de protection
/ Protection cover

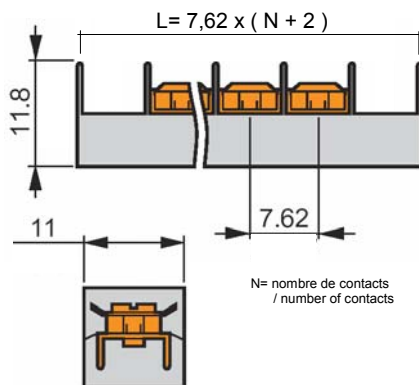
L 44 100

Pas / spacing : 7,62 mm

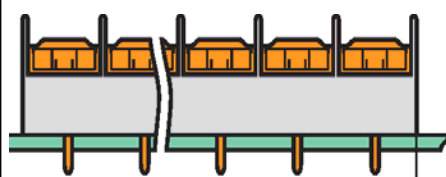
Nombre de pôles : 2 à 20



L 44 102



Options



L 107 100

Caractéristiques électriques /
Electrical characteristicsTension / rated voltage : 380 Volts
Intensité / rated current : 10 A

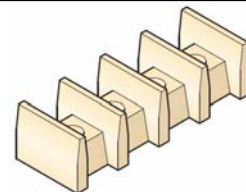
Matière / material

Vis / screw : acier / steel
Contact / terminal : laiton / brass
Matière / Insulation body : PA 66Autres caractéristiques /
Other characteristicsMarquage sur demande / Marking on request
Montage cosses sur demande
/ Special mounting on request
Couvercle de protection
/ Protection cover

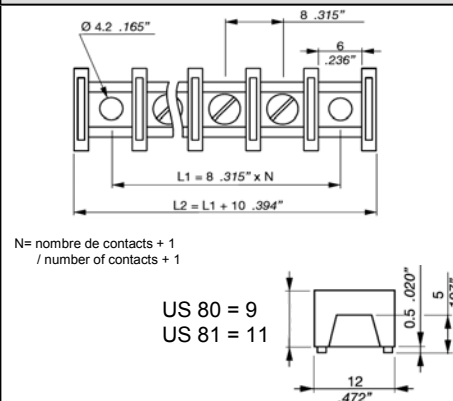
US 80 / US 81

Pas / spacing : 8,00 mm

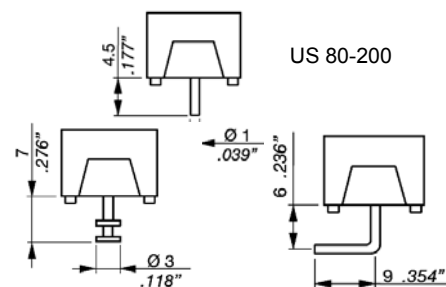
Nombre de pôles : 2 à 10



US 80-100-2



Options

Caractéristiques électriques /
Electrical characteristicsTension / rated voltage : 400 Volts
Intensité / rated current : 10 A

Matière / material

Vis / screw : acier / steel
Contact / terminal : laiton / brass
Matière / Insulation body : PA 66Autres caractéristiques /
Other characteristicsMarquage sur demande / Marking on request
Montage cosses sur demande
/ Special mounting on request
Couvercle de protection
/ Protection cover